

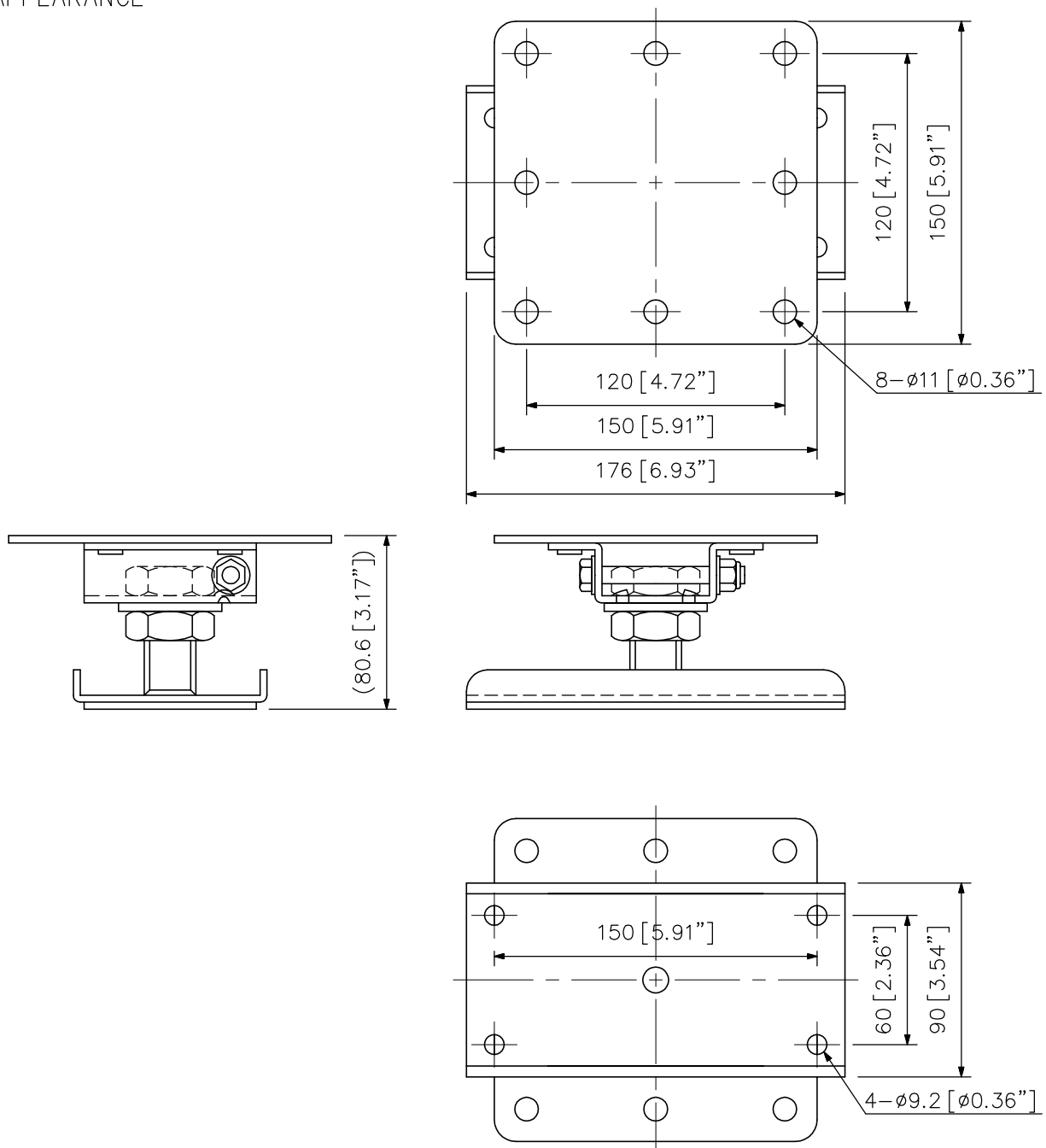
DESCRIPTION

The HY-C0801 Ceiling Mount Bracket is designed to mount the speaker system to a ceiling in conjunction with the optional speaker mount bracket.

SPECIFICATIONS

Finish	Rolled steel plate, black, semi-gloss, paint
Maximum Speaker Load	32 kg (70.55 lb)
Weight	1.9 kg (4.19 lb)
Accessory	Speaker mounting bolt (with washer) 4
Option	Mounting bracket: HY-0851ST, HY-0852ST, HY-1200HB, HY-1200VB, HY-1500HB, HY-1500VB
Applicable Speaker (option)	ES-0851, HS-120B, HS-150B, HS-1200BT, HS-1500BT

APPEARANCE



UNIT:mm SCALE:1/3